



# ELITech Microbio

## Service Catalogue



**ELITechGroup** is an integrated in-vitro diagnostics company that serves hospitals and diagnostic laboratories. The company develops, manufactures and markets a wide range of diagnostic products and solutions – instruments, reagents and software.

**ELITechGroup** comprises three product lines:



Molecular Diagnostics



Biomedical Systems



Microbiology

**ELITechGroup** has become a significant player in the worldwide IVD market:

- Headquarters in Paris, with strong European and US presence.
- Direct subsidiaries in France, Italy, UK, Benelux, North America, Australia, New Zealand.
- Serves customers in more than 100 countries



## ELITech Microbio

**ELITech Microbio** relies on its strong credo: to provide reliable and simple diagnostic tools for proximity labs in the Biology area.

Our innovative products are derived from our wide expertise combining agglutination tests and trays for identification or susceptibility testing. We bring our diagnostic support in the fields of **Bacteriology, Mycology** and **Parasitology**.

Thanks to substantial investment in research and development in recent years, the company has extended its product and service catalog to the **veterinary care** and **quality assessment** markets.

**ELITech Microbio** products are manufactured in an integrated plant in Signes, France.

- The company boasts solid know-how throughout the production chain, notably in R&D, manufacturing (expertise in lean manufacturing), quality assurance and logistics.
- ISO 13485 certification.
- 1000 m<sup>2</sup> of clean rooms, equipped for freeze-drying.

# CONTENTS



4

## EQA SAMPLES

Freeze-dried microorganisms  
Syndromic approach (Molecular Biology)  
Blood culture  
Specific parameters  
Bacteriology  
Puncture fluid  
Urogenital Mycoplasma  
Urinary antigen  
Slides for microscopic examination  
Parasitology  
Biochemistry

8

## IQC CIL SAMPLES

Sweat test  
Urogenital Mycoplasma

9

## CUSTOMIZED SERVICES

Freeze-drying  
Liquid distribution  
Culture media

Our R&D team can collaborate with organizations to define and create new specific samples

**All samples and batches to be customized to your preferences**

We are experts in freeze-drying

- ISO 13485 certification
- Custom certified packaging
- Batch size: 100 to 10 000 vials of 0.5 to 5 mL
- Labelling and sealing: different cap colors and flip off caps
- Flexibility on shipments: logistics center or directly to the laboratories



## FREEZE-DRIED MICROORGANISMS

### For culture & PCR

Customized concentrations of the following microorganisms, the list is not exhaustive:

- Bacteria: Enterobacteriaceae, Staphylococci, Streptococci, Pseudomonas, *Bordetella*, *Clostridium difficile*
- Viruses: Adenovirus, Endenovirus, CMV
- Fungus: *Candida*, *Aspergillus*, *Saccharomyces*, *Cryptococcus*
- Dermatophytes: Ringworm
- Mycobacteria: Tuberculosis

Minimum stability: 12 months

## SYNDROMIC APPROACH (MOLECULAR BIOLOGY)

### Freeze-dried synthetic matrices supplemented with viruses and/or bacteria

The following list is not exhaustive:

- **Pulmonary matrices** supplemented with *SARS-CoV-2*, *Influenza A, B*, *RSV*, *Mycoplasma pneumoniae*, *Legionella pneumophila*, *Bordetella pertussis*, ...
- **Gastrointestinal matrices** supplemented with *Adenovirus*, *Sapovirus*, *Campylobacter*, *Yersinia enterocolitica*, *Vibrio cholerae*, *Escherichia coli O157*, ...
- **Vaginal matrices** supplemented with *HSV*, *HPV*, *Chlamydia trachomatis*, *Mycoplasma genitalium*, *Neisseria gonorrhoeae*, ...
- **Meningeal matrices** supplemented with *HSV2*, *Neisseria meningitidis*, *Cryptococcus neoformans*, ...

Minimum stability: 12 months

## BLOOD CULTURE

### Contaminated blood

Kit containing two vials to be mixed:

- Vial with liquid blood
- Vial with freeze-dried germ to be customized with specific concentrations: *Enterobacteria*, *Staphylococcus*, *Streptococcus*, *Listeria*, *Pseudomonas*, yeasts ...

Minimum stability: 1.5 months

## SPECIFIC PARAMETERS

Each of the following parameters to be customized with specific concentrations.

- **Ethanol** in blood or serum
- **Procalcitonine** in blood
- **Cotinine** in urine
- **B-hCG** in blood or urine
- **Glucose** in blood or urine
- **Antibodies or antigens: HIV, HBS, HCV, Syphilis**

## BACTERIOLOGY

### Cytobacteriological examination of urine (CBEU) samples

PATENTED TECHNIQUE

Kit containing two vials to be mixed:

1. Freeze-dried vial to customize in terms of crystals (Struvite, Cholesterol, Oxalate) and bacteria (strains, enumeration, phenotype resistances).  
Minimum stability: 12 months
2. Liquid vial of real urine containing red and/or white blood cells (up to  $10^6$  cells per mL).  
Minimum Stability: 6 months

### **NEW** Total Urine: Real urine with biochemistry and cytobacteriological parameters

One freeze-dried vial and one liquid vial to be mixed with the following items to customise:

- Crystals: Struvite, Cholesterol, Oxalate
- Bacteria: strain, enumeration, phenotype resistance
- Red and/or White blood cells (up to  $10^6$  cells per mL)
- Biochemistry parameters: Amylase, Calcium, Chlorine, Creatinine, Glucose, Magnesium, Microalbumin, Phosphate, Potassium, Protein, Sodium, Urea, Uric acid

## PUNCTURE FLUID - CEREBROSPINAL AND KNEE JOINT FLUID

Kit containing 2 vials and one slide:

1. **Vial containing freeze-dried puncture fluid synthetic Matrices to be customized with specific concentrations of:**
  - Specific crystals: Urate, Pyrophosphate, Corticosteroid
  - Infectious germs: bacteria, virus, fungus

Minimum stability: 12 months

2. **Liquid vial containing red and/or white blood cells to be customized with specific concentrations: up to  $10^6$  cells per mL.**

Minimum stability: 6 months

3. **Fixed and colored slide for leukocytes formula.**

## UROGENITAL MYCOPLASMA

### Urine, or synthetic vaginal matrices

Freeze-dried samples containing enumerated strains of *Mycoplasma hominis* or *Ureaplasma urealyticum* with a selected antibioresistance.

Minimum stability: 12 months

## URINARY ANTIGEN

### *Legionella pneumophila* / *Streptococcus pneumoniae*

Freeze-dried urine matrices for the detection of *Legionella pneumophila* and *Streptococcus pneumoniae* antigens.

Minimum stability: 12 months

## SLIDES FOR MICROSCOPIC EXAMINATION

**Slides for microscopic examination**

The slides can be shipped empty with the samples to be coated on or they can be shipped already coated with the following:

- Tissues
- Fungus
- Parasites
- Blood smear
- Spread of vaginal swabs
- BAL (fixed to be colored)



Smear preparation

- Malaria
  - Blood smear (fixed and stained)
  - Colored thick drop
  - Freeze-dried blood tube:
    - for antigen testing
    - for gene amplification (PCR-LAMP)



## PARASITOLOGY

**Stool or stool suspension**

- **For concentration supplemented with:**

*Cryptosporidium* oocysts

Protozoal antigens:

- *Entamoeba histolytica*
- *Giardia duodenalis*
- *Cryptosporidium* sp.
- *Blastocystis hominis*

- **For PCR supplemented with:**

Helminths:

- *Ascaris lumbricoides*
- *Trichuris trichiura*
- *Taenia* sp.
- *Schistosoma mansoni*
- *Diphyllobothrium* sp. (*Dibothriocephalus* sp.)

Protozoa:

- *Entamoeba histolytica*
- *Giardia duodenalis*
- *Cryptosporidium* sp.
- *Blastocystis hominis*



## BIOCHEMISTRY

**Vitamin D**

25-Hydroxyvitamin D range of 20 to 150 nmol/L in serum.

Minimum stability: 12 months

**Urine - Sweat**

Freeze-dried or liquid urine/sweat sample to be customized with specific concentrations of the following parameters.

Minimum stability: 24 months

Parameter	Concentration	Urinary testing			Sweat testing
		Biochemistry	Strips	Lithiasis	
Albumin	1 - 15 mg/dL		•		
Amylase	243 - 1080 U/L	•			
Ascorbic acid	40 - 500 mg/dL		•		
Bilirubin	0 - 4 mg/dL		•		
Blood	0.075 - 0.75 mg/dL		•		
Calcium	1 - 4.5 mmol/L	•		•	
Chlorine	40 - 290 mmol/L	•			•
Citrate	0.7 - 4 mmol/L			•	
Conductivity	45 - 135 mmol/L				•
Creatinine	10 - 300 mmol/L	•	•		
Density	1.015 - 1.025 kg/L		•		
Glucose	0.3 - 500 mg/dL	•	•		
Ketones	0 - 300 mg/dL		•		
Leukocytes	40 - 1339 ng/mL		•		
Magnesium	1 - 10 mmol/L	•			
Microalbumin	77 - 182 mg/L	•	•		
Nitrite	0.05 - 0.2 mg/dL		•		
Oxalate	0.2 - 0.5 mmol/L			•	
pH	5 - 10		•		
Phosphate	7.9 - 26.1 mmol/L	•			
Potassium	12 - 138 mmol/L	•			
Protein	10 - 600 mg/dL	•	•		
Sodium	30 - 250 mmol/L	•			
Urea	88 - 180 mmol/L	•			
Uric acid	0.75 - 2.6 mmol/L	•		•	
Urobilinogen	1 - 8 mg/dL		•		

## SWEAT TEST

**Sweat test** 

Synthetic liquid sweat samples.

Parameter	Unit	Concentration
Chlore	mmol/L	35 - 120
Conductivity	mmol/L	45 - 135



Sweating and chlorine dosage device

## UROGENITAL MYCOPLASMA

**MYCOPLASMA CONTROL** 

Control strains for the diagnosis of urogenital mycoplasma.

Mycoplasma Control strains isolated from clinical specimens using standard methods and then freeze-dried.

- 6 freeze-dried strains of *Ureaplasma urealyticum* and 6 of *Mycoplasma hominis*
- Methods quality control in liquid media
- Meeting quality management requirements: ISO 15189:2007 recommendations
- Provides relevant results in accordance with MIC (minimum inhibitory concentration) values in liquid media.
- Compatible with various commercial methods.





## FREEZE-DRYING

The procedure is possible for 0.5 mL to 25 mL solutions.  
 Labelling and various crimping options available: cap colors and flip-off caps.



## LIQUID DISTRIBUTION

Filling of plastic galleries and bottles in the following formats :

- Screw-top bottles: 5 mL
- Syrup bottle: 50 mL; 100 mL; 200 mL; 500 mL
- Plastic bottle: 750 mL; 1000 mL

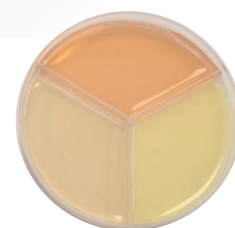
Labelling and selection of color of the screw caps is available.



## CULTURE MEDIA

Manufacturing and distribution of liquid or agar culture media in the following recipient :

- Petri Dishes: Bi- or Tri- compartments; Ø 50 mm; Ø 90 mm
- Vials: 5 mL



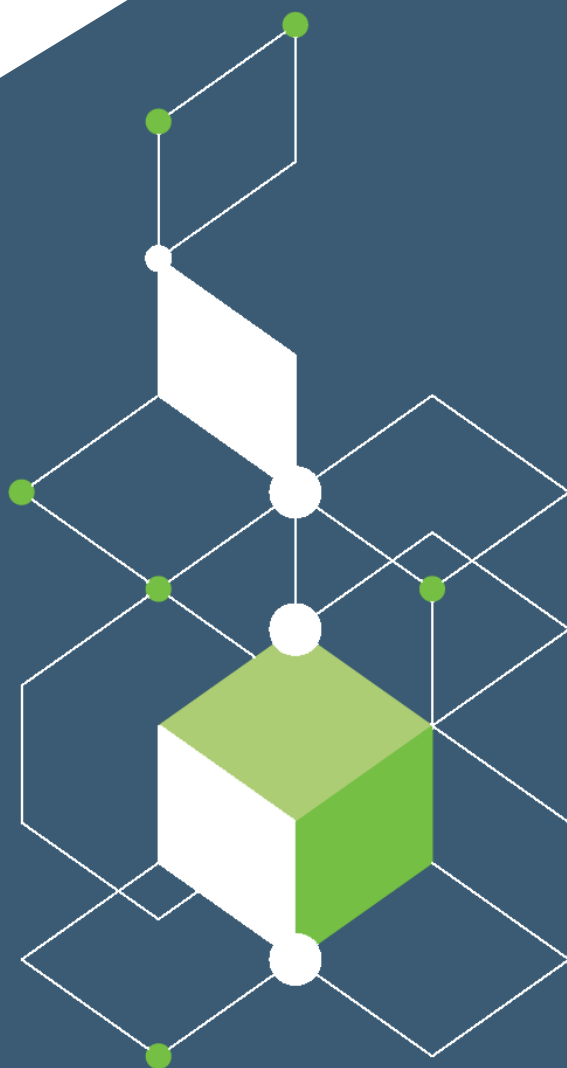


# ELITechGroup

A BRUKER COMPANY

## ELITech Microbio

19 Allée d'Athènes  
83 870 SIGNES  
France



**Note:** Product(s) intended for healthcare professionals. Read the instructions on the label and/or instructions for use of the product(s).